

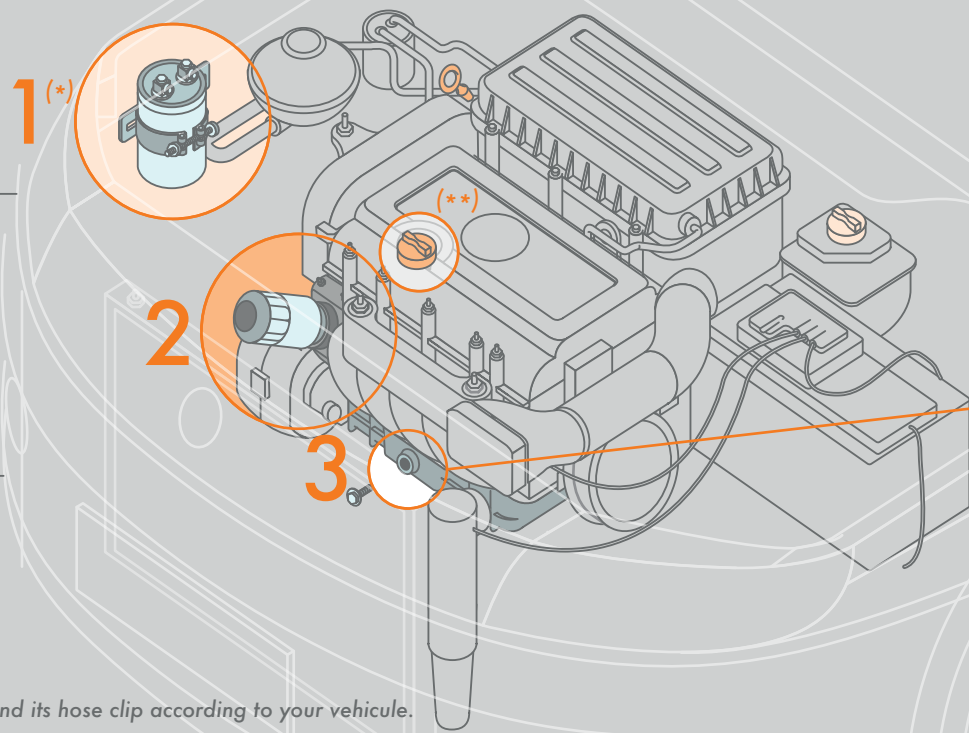
INSTALLATION

FILTER / PURIFIER

TOOLKIT:

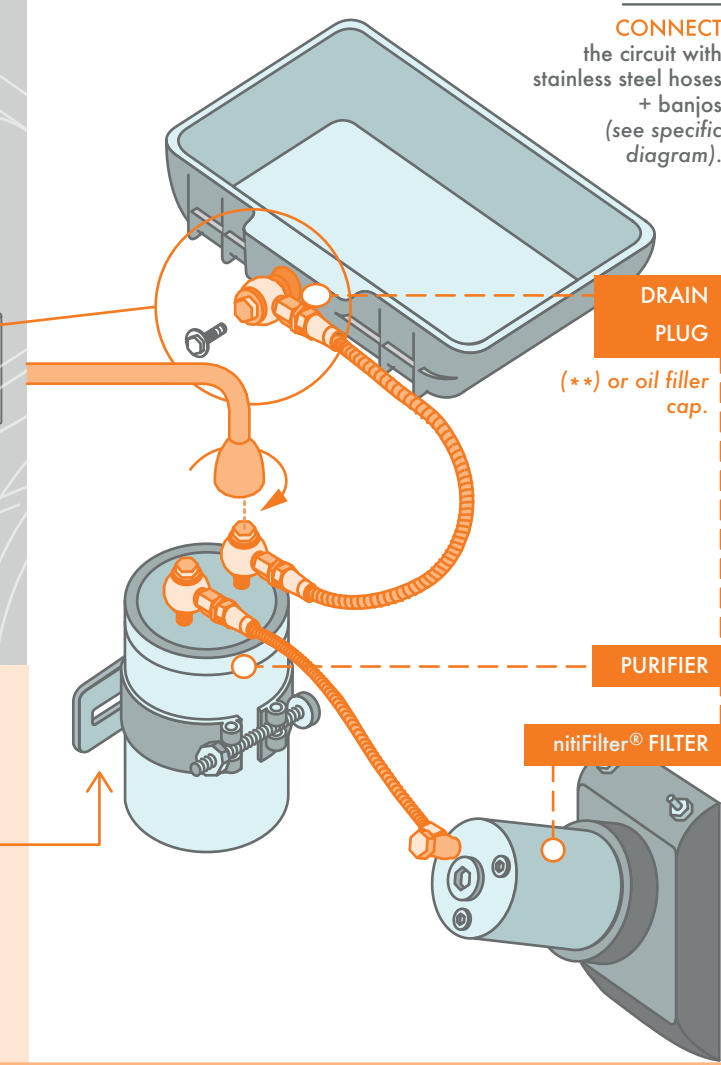
- Drill
- Metal drills: Ø6, Ø8, Ø11, Ø12
- Allen wrench: 5, 6
- Allen nozzle: 17
- Spanner: 13, 14 (qté 2)
- Ratchet wrench: 13, 14
- Adjustable wrench
- Filter wrench
- Hose clamp pliers

(*) Look for the best position for the purifier and its hose clip according to your vehicle.



3

CONNECT the circuit with stainless steel hoses + banjos (see specific diagram).

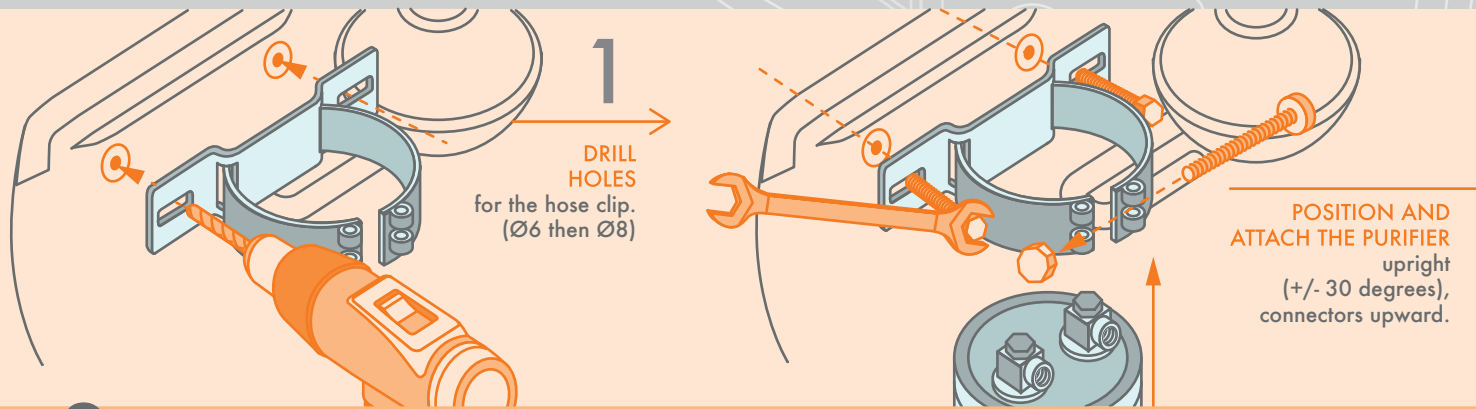


DRAIN PLUG

(**) or oil filler cap.

PURIFIER

nitiFilter® FILTER

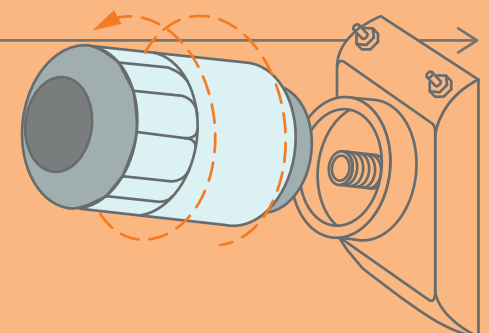


1
DRILL HOLES
for the hose clip.
(Ø6 then Ø8)

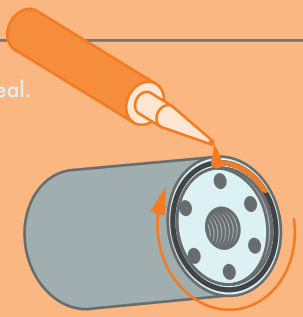
POSITION AND
ATTACH THE PURIFIER
upright
(+/- 30 degrees),
connectors upward.

2

REMOVE old oil filter.



OIL the nitiFilter® seal.



TIGHTEN THE FILTER by hand. Tighten with wrench until contact is made.

